



THE FLIGHTLINE



AMA CLUB 668 SINCE 1968
RACINE RADIO CONTROL CLUB INC SINCE 1968

RRCC August Issue
August 15, 2021 Newsletter

WE ARE ON THE WEB
www.racinerclub.com

Club Officers

President

James Litwin
262-637-2787 (Cell 262-939-7926)
president@racinerclub.com

Vice President

Roger Nickolaus
414-761-1907 (Cell 414-405-8004)
vp@racinerclub.com

Secretary/Treasurer

Bob Johnson 847-421-5494
secretary@racinerclub.com

Field Chairman

"Hoss" Hossalla
414-651-0968
field@racinerclub.com

Safety Officer

Dan Pozel
262-939-0548
safety@racinerclub.com

Tractor Chairman

Eric Armantrout
262-498-1035
tractor@racinerclub.com

Compost Director

Jerry Rose
262-639-6711
compost@racinerclub.com

Webmaster

Justin Francisco
414-484-4574
web@racinerclub.com

Newsletter Editor

Dennis Vollrath
Cell 262-994-6342
newsletter@racinerclub.com

Editors Note:

There are no minutes on this newsletter since we had the club picnic last July in place of the monthly meeting.

DennyV

JIM'S CORNER

It's very warm and dry. We haven't needed to cut the field in 3 weeks – too dry. Ground is also HARD, so crashes will hurt your plane a lot more right now! When at the field, stay hydrated.

Instead of having a July meeting the membership elected to have the annual picnic, and it was a great success. Very enjoyable and relaxing. As usual Roger Nickolaus did a superb job getting it all organized.

At this month's August 15th meeting, we will finalize plans the August 22 flying event. Call it a "Fun Fly" or "Open House" or whatever. Other club will be notified they can come and fly with us, no landing fees, free food and lots of fun and fellowship.

We are also getting into the early season for our club administrative issues. The formal announcement will be in next months Newsletter, but here's what is coming up.

September announce club officer positions will be open for nomination.

September announce that submissions for proposed club "By Law" & "Field Rule" Changes will need to be submitted by October 1st. September Newsletter will contain more detailed guidance for proposed changes.

Proposed changes will be published in the October & November Newsletters.

Voting on proposed changes will take place at the November club meeting.

Voting for club officers will take place at the November club meeting.

The membership dues rate will be voted on at the December meeting.

If you haven't done so yet, please go to the AMA website and take the "TRUST" test as mandated by the FAA as a result of action by the US Congress. It's an easy test (Can't fail) and it's also a BIG Cover Your A** in the event something serious occurs or some-

one files a complaint.

It seems that a lot of new aircraft are showing up at the field. Take some time and check them out. They are all nice!

Our next club meeting is at the field on Sunday, August 15th at 1:00 PM. See you then.

Fly Safe & Have Fun
Jim Litwin
President

Dennys Stuff

It's been rather slow around your editors home lately. I do have some new items that have been purchased lately to write about this month.

Several months ago, your editor purchased a couple of Pitot tubes for live indication of the aircrafts air speed. These units are very small, and will work in just about any model weighing in at several pounds or more.



That's the good news. Bad news, you have to have a receiver with telemetry capability. And, I'm using my Spektrum nX10 transmitter with it.

The Spektrum part number for the Pitot tube and receiver interface is

SPMA9574, that goes for \$49.99 on the Horizon Hobbies web site. I'm using one of my Spektrum AR8020T receivers with telemetry and altitude monitor with the Pitot tube. (By the way, that Spektrum AR8020T receiver is a **very** nice unit.)

I've got a couple of flights on this setup with my tried and true 10 year old Kantana model, with its 1200 Watt electric motor on the 8 pound airplane.

The nX10 transmitter can be programmed to give voice indications of both altitude and airspeed with a programmable interval between voice indications of airspeed.

I had mine programmed for continuous voice indications of altitude and airspeed. To me, that was a bit to much. Next flights will be either altitude, or airspeed, every five seconds.

The Pitot tube indicated that the maximum level speed of my Kantana model was 59 MPH on level flight. Landing speed was 26 MPH, lift off speed was around 35 MPH.

This feature might be a bit useful for those members with very large \$\$\$\$ models where landing speed is so critical. I've not had a lot of practice with

this unit since having cataract surgery, and recovery from it. Plus, it's either been to hot, to windy, to cloudy, or all of the above!

Last newsletter issue, I reported that my original three year old Wanhao 3D printer finally got to where it would not reliably print a project without the project lifting off of the printing platter.

I took the printing head completely apart, reset a few things, reassembled, and tried again. No success. Crap. So after a few weeks of playing with it, I bit the bullet, and bought a [Crealty3D CR-6 SE 3D Printer](#) directly from the Creality web site for \$400.00, including shipping costs.

This printer is far superior to my original three year old Wanhao printer.

FYI, these 3D printers require "Leveling" the printing bed before printing your project. By leveling, the distance between the printing head and the printing bed must be between 0.0015 and 0.0025 inches over the entire 6 inch by 6 inch platform.

It is a real pain in the *** to maintain this distance accurately over the entire area of the 6 by 6 inch printing platform using only the four provided spring loaded thumb screws on the printing platform of my old Wanhao 3D printer.

The Creality CR-6SE printer uses a strain gauge (Very accurate process) to check distance between the printing head and the printing platform. A total of 16 measurements are made automatically and stored for the current printing session. These 16 measurements compensate if

the print table isn't flat.

The results are far superior to my old Wanhao unit.

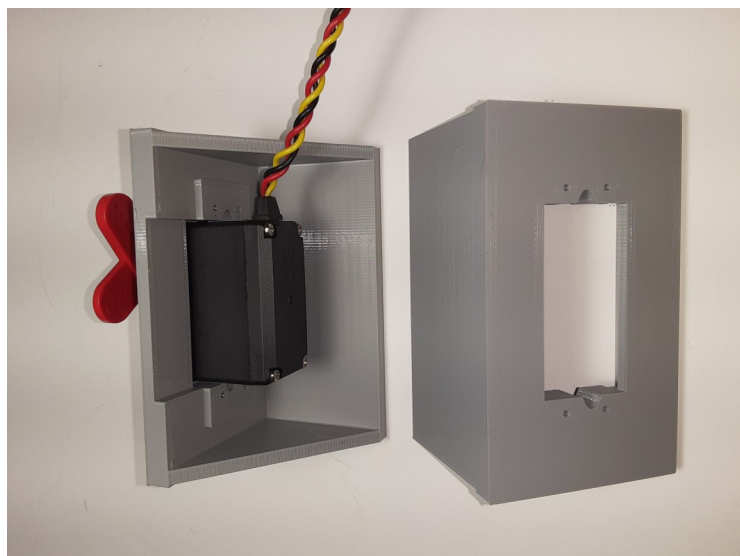
I've found that it is best to auto-level the printing platform on my Creality printer every time before printing a new project.

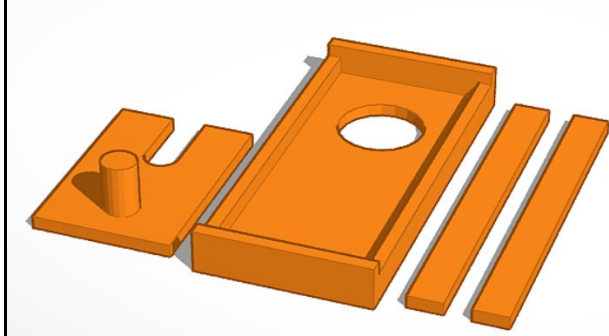
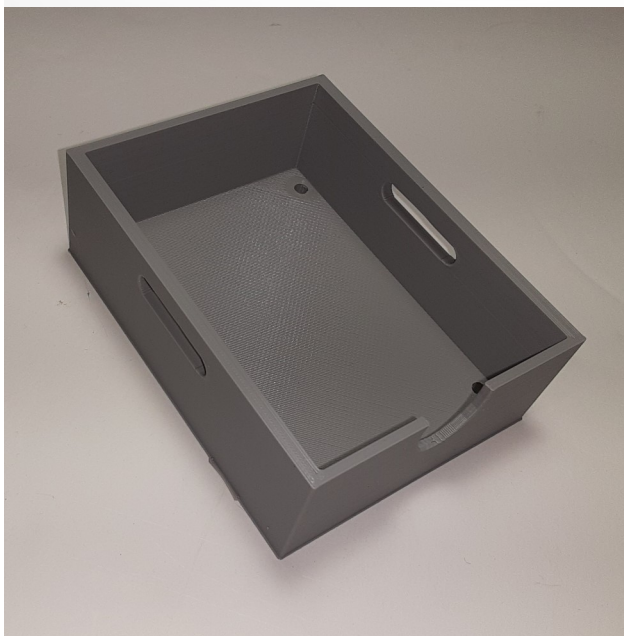
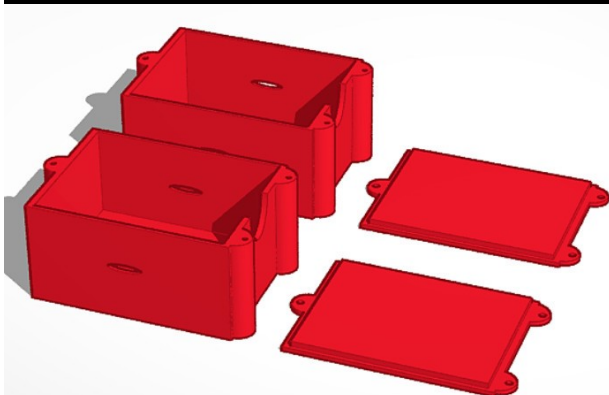
Auto-level takes just over one minute after you initiate the heaters for the print head and the print platform. After the auto-leveling is completed, then the 3D printer has a command to adjust the space between the print head and the print platform to the thickness of a single sheet of paper. It takes two minutes, and it is ready to go.

IMHO, I'd **NEVER** buy another 3D printer without the automatic leveling function.

(FYI, The print head operates at 400 degrees F, the printing platform operates at 140 degrees F)

Many of the RRCC club members have either seen my 3D printed projects, or have ordered some printed projects from me. Just recently, Steve needed some servo mounting brackets. Here is a photo of them.





The top project is a box for those A123 battery packs with a lid. Center photo is an A123 box with the battery pack secured with a piece of Velcro. The box has holes provided to allow screwing the box to the model. The bottom photo is a device that allows quick installation of the wing bolts on our model airplanes. I just looked, I've got over 50 different projects.

Last but not least, I was working on this newsletter last night, August 10 PM, when the power went out at 7:30 PM from the storm we had in this area.

The power was out until 1:30 AM, the following morning. History of your editors job experience. I worked for 44 years at a company that manufactured automatic reclosing circuit breakers that protect the high voltage power lines that protect the electric power companies equipment.

The job included working with countless customers over those years, including conducting many training sessions with them.

Interesting info, around 85% of the short circuits on these power lines are temporary, like a lightning strike to the power lines. If the fault is temporary, the circuit breaker can be programmed to close the breaker back in to see if it holds.

Typically, these breakers are programmed to try up to four times. Well, our power went out, came back on in 5 seconds, immediately went out again, came back on in another 15 seconds. The power went out again, we were without power for some 6 hours.

My backup generator kept everything working, including the sump pump.

For us, I drove around our neighborhood to see what's what. The power was out from 7 mile road to 4 mile road. Everything from about 1 mile West of highway 32 to Lake Michigan and 4 mile to 7 mile road was dark.

Buzz, thanks for the photos!





Date+K2 0129A1: KA1:K3 9	Time	Name(1)	Name(2)	Substitute		Date	Time	Name(1)	Name(1)	Substitute
04/07/21	12-2	Darrel Hossalla				08/11/21	12-2	William Bylsma		
04/07/21	2-4	Darrel Hossalla				08/11/21	2-4	Charlie Reich	Jim Houtsinger	
04/07/21	4-6	Terry Peterson				08/11/21	4-6	Gary Bokowy		
04/14/21	12-2	Roger Nickolaus				08/18/21	12-2	Bill Flannery	Chris Stien	
04/14/21	2-4	Roger Nickolaus				08/18/21	2-4	Charlie Reich	Chris Stien	
04/14/21	4-6	Terry Peterson				08/18/21	4-6	Gary Bokowy	Chris Stien	
04/21/21	12-2	Terry Peterson				08/25/21	12-2	Wayne Greisen	Thomas Dremel	Stephen Knackert
04/21/21	2-4	Darrel Hossalla				08/25/21	2-4	Ray Fisher	Thomas Dremel	Jerry Rose
04/21/21	4-6	Jason Fisher		Stephen Knackert		08/25/21	4-6	Ray Fisher	Thomas Dremel	Carl Bergqueist
04/28/21	12-2	Roger Nickolaus	Arland Matson			09/01/21	12-2	Carl Bergqueist	Edward Witt	
04/28/21	2-4	Rich Smentek				09/01/21	2-4	Dennis Vollrath		
04/28/21	4-6	Jason Fisher		Charles Roberts		09/01/21	4-6	Dan Pozel	Jim Houtsinger	
05/05/21	12-2	Jason Fisher	Arland Matson	Stephen Knackert		09/08/21	12-2	Wayne Greisen	Ronald Hayes	
05/05/21	2-4	Dennis Vollrath				09/08/21	2-4	Wayne Greisen	Ronald Hayes	
05/05/21	4-6	Dan Pozel				09/08/21	4-6	Donald Parkinson	Ronald Hayes	
05/12/21	12-2	Charles Roberts	Arland Matson			09/15/21	12-2	Richard Stapleton	Charles Brzezicki	
05/12/21	2-4	Carl Bergquist	Edward Witt			09/15/21	2-4	Richard Stapleton	Charles Brzezicki	
05/12/21	4-6	Raymond Redlin				09/15/21	4-6	Richard Stapleton	Charles Brzezicki	
05/19/21	12-2	Jerry Rose				09/22/21	12-2	Donald Parkinson	Bruce Napieryowsk	
05/19/21	2-4	Dennis Vollrath				09/22/21	2-4	Bill Flannery	Bruce Napieryowsk	
05/19/21	4-6	Eric Armantrout	Ron Dixon			09/22/21	4-6	Bill Flannery	Gerald Bublav	
05/26/21	12-2	Matthew Holl	Charles Roberts			09/29/21	12-2	Douglas Karge	Bruce Napieryowsk	
05/26/21	2-4	Matthew Holl				09/29/21	2-4	Douglas Karge		
05/26/21	4-6	Matthew Holl	Manuel Gonzalez			09/29/21	4-6	Douglas Karge	Gerald Bublav	
06/02/21	12-2	Charles Roberts		Stephen Knackert		10/06/21	12-2	Buzz Paricka	Pete Luks	
06/02/21	2-4	Rich Smentek				10/06/21	2-4	William (Oz) Miller		Ron Dixon
06/02/21	4-6	Dan Pozel	Manuel Gonzalez			10/06/21	4-6	Jim Houtsinger	Gerald Bublav	
06/09/21	12-2	Jerry Rose	Jim Smith			10/13/21	12-2	Trygve Smalley		
06/09/21	2-4	Ray Fisher				10/13/21	2-4	William (Oz) Miller		Ron Dixon
06/09/21	4-6	Ray Fisher	Manuel Gonzalez			10/13/21	4-6	Stephen Knackert	Donald Parkinson	
06/16/21	12-2	Charles Roberts				10/20/21	12-2	Trygve Smalley		
06/16/21	2-4	Rich Smentek				10/20/21	2-4	William (Oz) Miller		Ron Dixon
06/16/21	4-6	Justin Francisco		Dallel Hosssalla		10/20/21	4-6	Stephen Knackert		
06/23/21	12-2	Raymond Redlin				10/27/21	12-2	Buzz Paricka	Dennis Krzyzanek	
06/23/21	2-4	Raymond Redlin				10/27/21	2-4	Buzz Paricka	Dennis Krzyzanek	
06/23/21	4-6	Justin Francisco				10/27/21	4-6	Trygve Smalley		
06/30/21	12-2	Jim Litwin	Jim Smith			11/03/21	12-2	Stephen Knackert	James Martinich	
06/30/21	2-4	Jim Litwin	Jim Smith			11/03/21	2-4	James Martinich		
06/30/21	4-6	Jim Litwin				11/03/21	4-6	James Martinich		
07/07/21	12-2	Bob Johnson	Roger E Olsen			11/10/21	12-2	Paul Willems		
07/07/21	2-4	Bob Johnson	Roger E Olsen			11/10/21	2-4	Pete Luks		
07/07/21	4-6	Eric Armantrout	Ron Dixon			11/10/21	4-6	Jim Strelitzer		
07/14/21	12-2	Bob Johnson	Roger E Olsen			11/17/21	12-2	Paul Willems	Michael Stein	
07/14/21	2-4	Carl Bergqueist	Edward Witt			11/17/21	2-4	Michael Stein		
07/14/21	4-6	Justin Francisco	Helmut Schmidtke	Roman Kirykowicz		11/17/21	4-6	Jim Strelitzer	Michael Stein	
07/21/21	12-2	Jerry Rose				11/24/21	12-2	Paul Willems		
07/21/21	2-4	William Bylsma				11/24/21	2-4	Pete Luks		
07/21/21	4-6	Eric Armantrout	Ron Dixon			11/24/21	4-6	Jim Strelitzer		
07/28/21	12-2	William Wampler	Ronald Schroeder			12/01/21	12-2	Steven Navone		
07/28/21	2-4	William Wampler	Ronald Schroeder			12/01/21	2-4	Steven Navone		
07/28/21	4-6	William Wampler	Helmut Schmidtke	Roman Kirykowicz		12/01/21	4-6	Steven Navone		7
08/04/21	12-2	William Bylsma	Ronald Schroeder							
08/04/21	2-4	Charlie Reich	Dennis Krzyzanek							
08/04/21	4-6	Gary Bokowy	Helmut Schmidtke	Roman Kirykowicz						